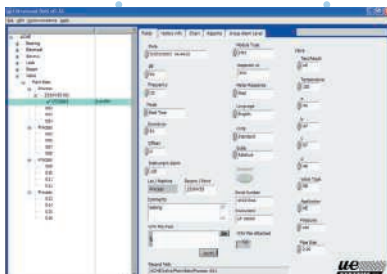


ULTRAPROBE® 10,000

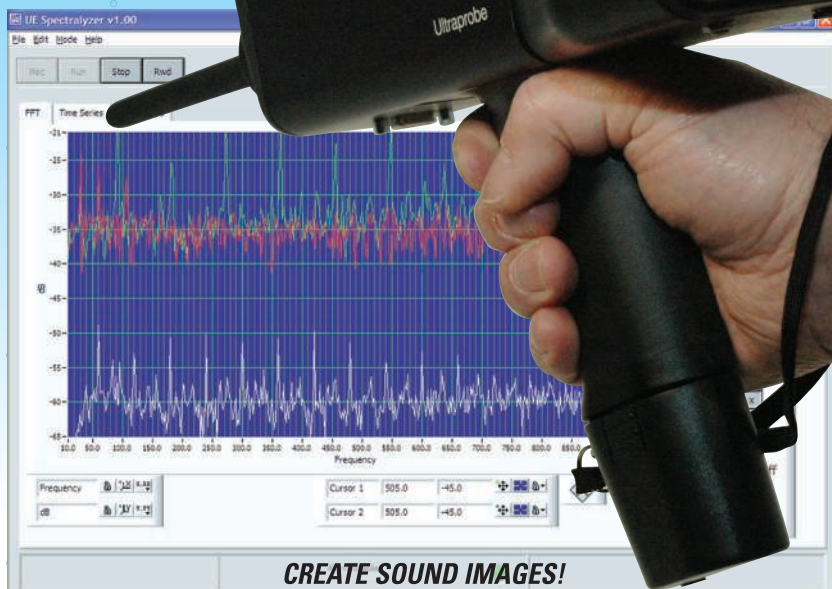
Take complete control of your inspection system — put a condition monitoring program in the palm of your hand!

The Ultraprobe® 10,000 is the world's most advanced ultrasonic inspection system! This innovative instrument is jam-packed with so many features it will make your inspections efficient and easy! From the very instant you hold the Ultraprobe 10,000 in your hand, you'll be convinced that this is a truly remarkable feat of engineering. Feel the well-balanced pistol grip, the elegance of simplicity and the clarity of signal. The "10,000" is ready to unleash the potential of any inspection program for you. The Ultraprobe 10,000 enables you to:

- Record and Analyze Sound Samples
- Perform Condition Analysis
- Store Test Data
- Trend Results
- Review Inspection Results
- Manage your Test Data...



Advanced reporting and analysis



CREATE SOUND IMAGES!

ALL WITH JUST ONE INSTRUMENT! And that's just the tip of the iceberg

The Ultraprobe 10,000 features on-board Sound Recording with a push of a button. You'll record a sound sample directly into the instrument and link it to one of 400 record files stored in the Ultraprobe!



Test/Trend all types of machinery

The Ultraprobe 10,000 simplifies sound recording with user-friendly **Spin and Click™** technology using just two controls.

Test the way you want with:

- Specialized Application Screens
- Adjustable On/Off Features
- Connection to External Devices
- Flexible Reporting Options

ue
SYSTEMS INC
The **ultrasound** approach

ULTRAPROBE® 10,000

A Complete Ultrasonic Asset Management System.

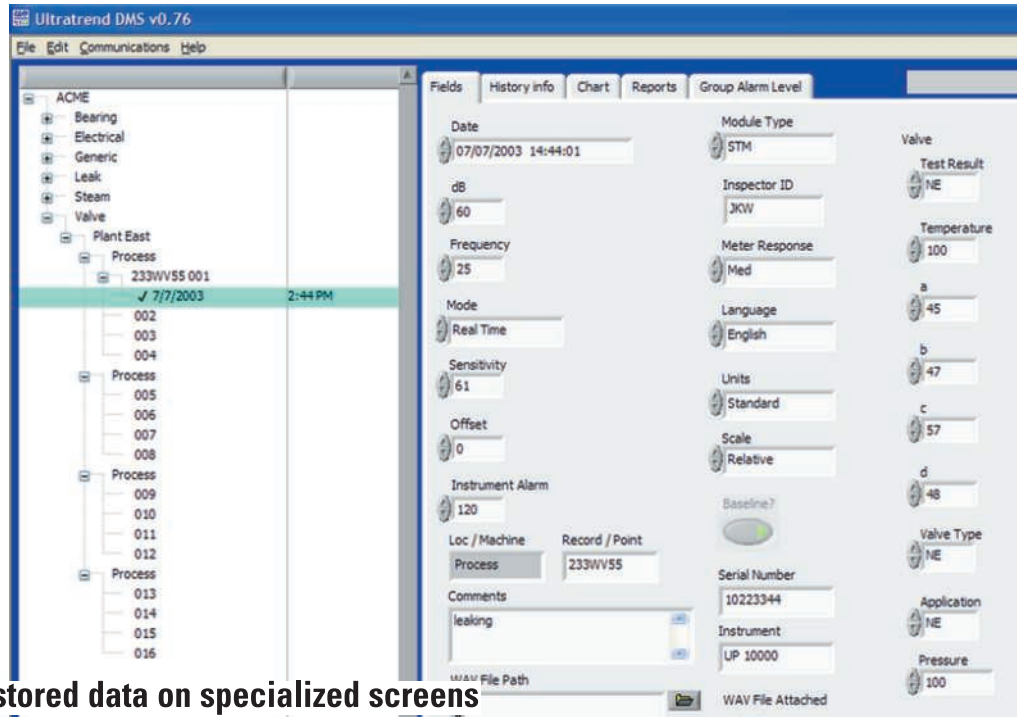
What do you want to test?

Whatever it may be the **Ultraprobe 10,000** has application-specific software for you. With the click of a button, you can select an application with specialized fields for accurate reporting and analysis.

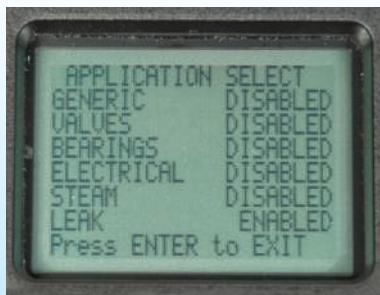
Select any of 6 applications:

Generic, Leaks, Valves, Bearings, Electrical or Steam and the Ultraprobe 10,000 automatically sets relevant fields for your data logging convenience – all stored data is easily downloaded to the Ultratrend DMS™ software.

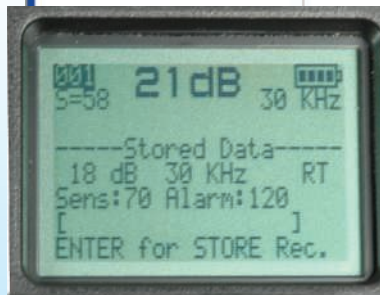
Expand your inspections. In addition to on-board data logging, the Ultraprobe 10,000 accepts and stores data from external devices such as thermometers and tachometers.



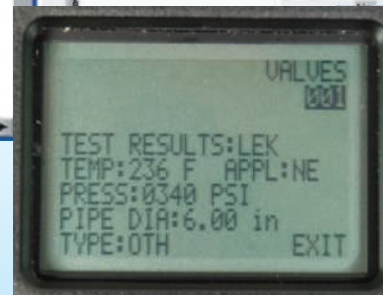
Review stored data on specialized screens



Select from 6 specialized applications



Data storage screen



Test info screen

Specialized fields for the valve application

Everything needed for specialized testing is included with the Ultraprobe 10,000 Inspection System.



LONG RANGE MODULE will double the detection distance of the standard Trisonic™ Scanning Module and enhance performance for any electrical or leak inspection job. With a 10° field of view, you can pinpoint the exact location of a problem at a safe distance – no need for ladders or a lift!



RAS-MT – REMOTE ACCESS SENSOR MAGNETIC MOUNT TRANSDUCER comes with cable, which allows users to test hard-to-reach test points. In addition, it provides for consistency in test results by eliminating variables such as angle of approach and contact probe pressure.



STETHOSCOPE MODULE with Rounded tip wave guide (top). Pointed tip wave guide for Stethoscope Module (bottom).

Data Management & Spectral Analysis Software for Accurate Recording & Reporting

The Ultraprobe 10,000 System includes both **Ultratrend DMS™** and **UE Spectralyzer™** software to help you organize and analyze inspection results.

ULTRATREND DMS™ – Data Management System

A comprehensive record storage, data management and data analysis program, the Ultratrend DMS allows you to:

- Have multiple views for reviewing data.
- Create history tables and trend charts to review any changes in any of the relevant test fields.
- View data on a trend chart embedded in the program or easily export the file to MS Excel.
- Generate alarm groups to highlight those items that can either be retested or designated for corrective action.

NEW! Unsurpassed flexibility with Compact Flash Card Technology

Additional capabilities to help you:

- Upload
- Download
- Store wave files
- Upgrade



Never lose information. The Compact Flash Card will hold all sound files for easy downloading onto a PC. Kit also includes an adapter.

ONBOARD SOUND RECORDING...AS EASY AS 1, 2, 3!

With onboard sound recording, just **Spin and Click™**. That's all that's needed to record a sound sample with the Ultraprobe 10,000.

Play sounds back in real time. Hear them through headphones or play them on your computer. All sounds are stored on a Compact Flash Card for easy downloading.

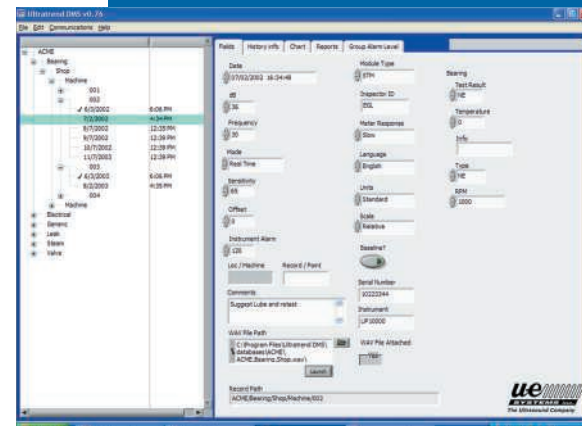
- **NEVER LOSE TEST INFORMATION!** An *invaluable* built-in failsafe feature saves information onto Compact Flash Cards. Now you can record, store and save wave files. Includes adapter.

While viewing the sound images, you'll be hearing the sound as it's being played in real time to enhance analysis.

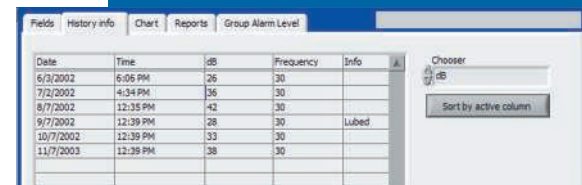
UE SPECTRALYZER™ – Spectral Analysis Software

The UE Spectralyzer™ is a spectral analysis software, which converts a PC into a fully functioning FFT analyzer. It provides both spectra and time series views of recorded sounds. With this software, sound images are easily produced for reporting. You can even attach each sound sample to a file or include an image of the spectra in your report.

DATA VIEWS

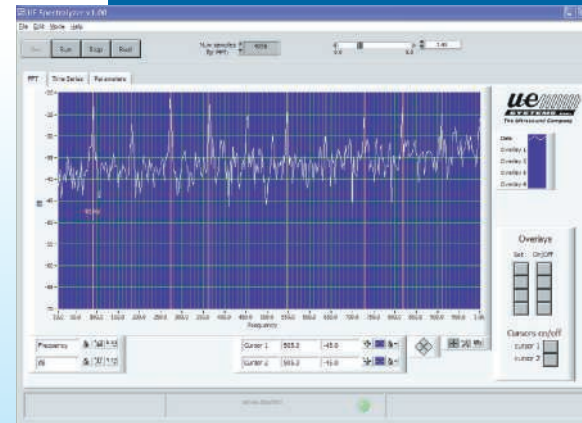


View data by date

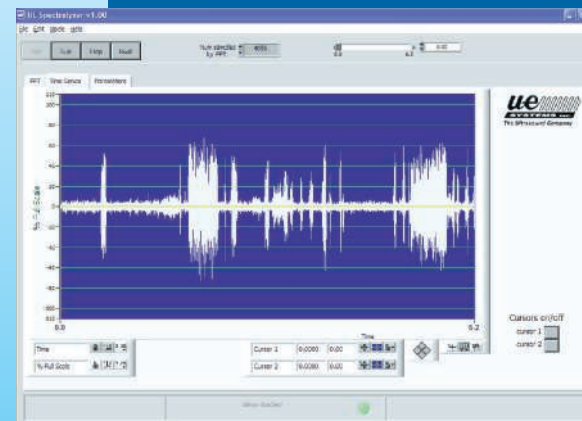


View data history and sort columns for analysis

SOUND IMAGING



View subject sound samples as a spectrogram



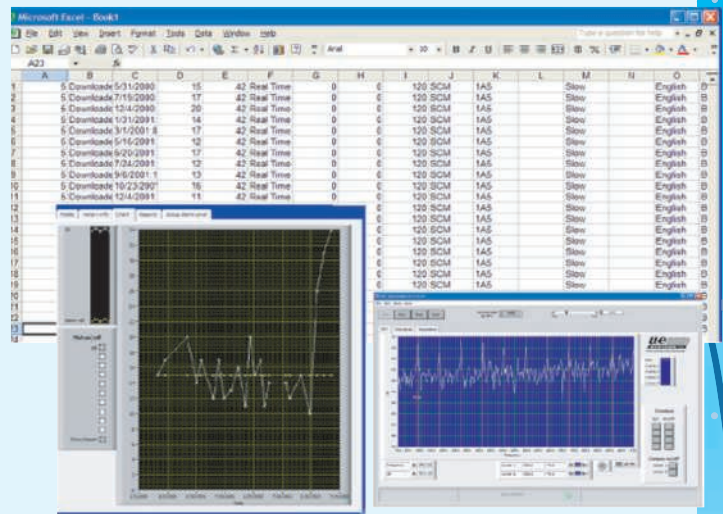
View sound samples in time series

Consider the possibilities with the ULTRAPROBE® 10,000:

Once you've used this instrument, you'll want no other!

The Ultraprobe 10,000 assists Reporting, Analyzing and Record keeping. For example, you can:

- Trend a group of bearings over time
- Trend one bearing over time
- Analyze steam trap history and costs
- Analyze leak costs
- Note patterns in electrical failure
- Record valve sounds
- Analyze mechanical sounds...



And here's a possibility – try to trend a bearing over time. When it exceeds an alarm level, take a spectra and combine all of the data into one report.

Typical Ultraprobe Applications

Data Based Mechanical Inspection/Trending

- Bearing Conditions
- Rubbing Conditions
- Cavitation
- Gears/Gear Boxes
- Pumps/Motors
- Lack of Lubrication

Data Based Leak Detection/Energy Audits

- Compressed Air
- Compressed Gases (O₂, NO, etc.)
- Vacuum Leaks
- Seals and Gaskets
- Condenser Tubes
- Cockpit Windows
- Hatches
- Boilers
- Heat Exchangers
- Valves
- Steam Traps

Data Based Electrical Inspection

- Arcing
- Tracking
- Corona
- Switchgear
- Transformers
- Insulators
- Relays
- Bus Bars



ULTRAPROBE® 10,000 Specifications

Construction:	Hand-held pistol type made with coated aluminum and ABS plastic
Circuitry:	Solid State Analog and SMD Digital Circuitry with temperature compensation and true RMS conversion
Frequency Range:	20 kHz to 100 kHz (tunable in 1 kHz increments)
Response Time:	< 10 ms
Display:	64 x 128 LCD with LED Backlight
Memory:	400 storage locations
Battery:	Lithium ION Rechargeable
Operating Temperature:	32°F to 122°F (0°C to 50°C)
Outputs:	Calibrated heterodyned output, decibel (dB) frequency, RS-232 data output
Probes:	Trisonic Scanning Module and Stethoscope Module, Long Range Module and RAS-MT
Headset:	Deluxe noise attenuating headphones – for hard hat use
Indicators:	dB, Frequency, Battery Status and 16 Segment Bar Graph
Sensitivity:	Detects .005" (.127 mm) diameter leak @ 5 psi (.34 bar) at a distance of 50 ft. (15.24 m)
Threshold*:	1 x 10 ⁻² std. cc/sec to 1 x 10 ⁻³ std. cc/sec
Dimensions:	Complete kit in Zero Halliburton aluminum carrying case 21.5" x 18.5" x 8" (55 x 47 x 20 cm)
Weight:	Pistol Unit: 2.35 lbs. (1.1 kg) Complete carrying case: 19 lbs. (8.6 kg)
Warranty:	1-year parts/labor standard, 5 years with completed warranty registration card.
Display Modes:	Real Time, Snap Shot, Peak Hold, Storage Display, and Application Specific

*depends on leak configuration

Ultraprobe 10,000 Kit: Meets and exceeds ASTM E1002-2005 requirements for Leak Detection.

Covered by one or more of the following patents: 0151115; 0303776; 0315199; 1206586; 1297576; 1881263; 2562758; 2689339; 4416145; 4823600; 5955670; 6122966; 6339961; 6341518; 6415645; 6655214; 6707762; 6804992

UE Systems is committed to continual product improvement; therefore specifications are subject to change without notice. Warranty details are available by request.

ue
SYSTEMS INC
The ultrasound approach

14 Hayes Street • Elmsford, NY 10523-2536 USA
P: 914.592.1220 • F: 914.347.2181 • Toll-free: 1.800.223.1325
E: info@uesystems.com • www.uesystems.com